

Data Sheet

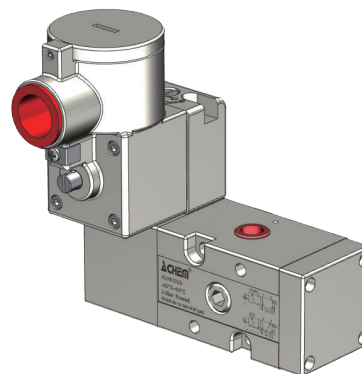
Product ID ALV210L1Q1C10-810U3

PRODUCT NAME

Multi-Function Pilot Acting Solenoid Valve of Flameproof

DESCRIPTION OF THE PRODUCT

It has two remarkable features. 1. The same valve body can be available with both Namur connection and In-line connection. 2. The 5/2 and 3/2 functions can be easily switched for the same valve body. This type of valve's flow rate is relatively large, and the air port can be selected between 1/4 and 1/2. Armed with stainless steel enclosure coil, this solenoid valve is excellent for being used in hazardous area Ex db IIC T6 Gb).



APPROVED BY



IP67

Coil Specification: ALV210L1Q1C10

Coil Enclosure	Stainless steel 316
Wiring Connector	M20-1.5 or 1/2"NPT, Terminal Strip

BODY TECHNICAL DATA

Body	Stainless steel 316	Operating Voltage	24/110/220VDC±10% ≤5W 24/110/220VAC±10% ≤ 6VA(50/60Hz)
Seal	Buna N	Voltage Tolerance	±10%
Fasteners	Stainless steel	Insulation Protection	H class
Function	5/2 or 3/2NC,Pilot acting,Monostable	Insulated voltage	1000V
Flow rate(Orifice)	CV =1.1 (19.63mm ²)	Duty factor	100% ED
Air Ports	G1/4" or NPT	Area Classification	Ex db IIC T6 Gb, Ex tb IIIC T85°C Db, Class I, Division 1, Groups A, B, C, D T6

Manual Override on the body

Mounting Namur mounting & In-line

Working pressure 2~8 bar

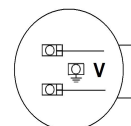
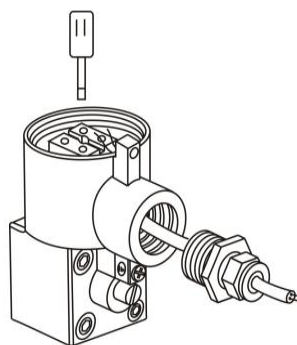
Working Medium less than 40µm filtered and dried air

Working Temp. -40℃~60℃

Environment. Indoor and Outdoor

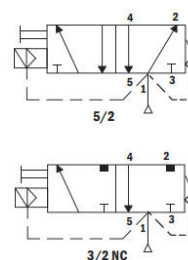
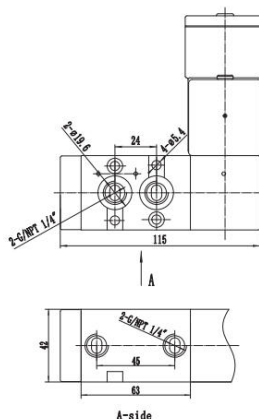
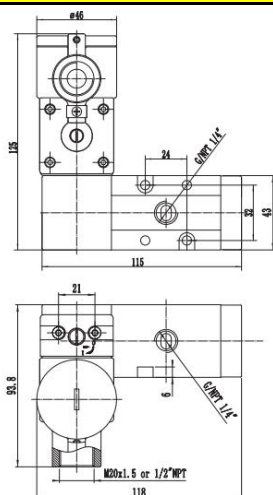
Wiring direction Front wiring

Wiring Diagram and Operating



Note: The Exd Cable Gland is not included. Enquiry please contact with us.

DIMENSION AND DRAWING



*For continuous improvement of the product, we reserve the right to alter the dimensions, technical data in this data sheet.

ALLIED AUTOMATION

www.allied-actuator.com

info@allied-actuator.com

Data Sheet

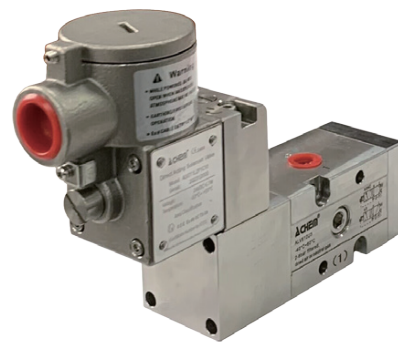
Product ID ALV210L1Q1C10-810U3s

PRODUCT NAME

Multi-Function Pilot Acting Solenoid Valve of Flameproof

DESCRIPTION OF THE PRODUCT

It has two remarkable features. 1. The same valve body can be available with both Namur connection and In-line connection. 2. The 5/2 and 3/2 functions can be easily switched for the same valve body. This type of valve's flow rate is relatively large, and the air port can be selected between 1/4 and 1/2. Armed with stainless steel enclosure coil, this solenoid valve is excellent for being used in hazardous area Ex db IIC T6 Gb).



APPROVED BY



IP67

Coil Specification: ALV210L1Q1C10

Coil Enclosure	Stainless steel 316
Wiring Connector	M20-1.5 or 1/2"NPT, Terminal Strip

BODY TECHNICAL DATA

Body	Stainless steel 316	Operating Voltage	24/110/220VDC±10% ≤5W 24/110/220VAC±10% ≤ 6VA(50/60Hz)
Seal	Buna N	Voltage Tolerance	±10%
Fasteners	Stainless steel	Insulation Protection	H class
Function	5/2 or 3/2NC,Pilot acting,Monostable	Insulated voltage	1000V
Flow rate(Orifice)	CV =1.1 (19.63mm ²)	Duty factor	100% ED
Air Ports	G1/4" or NPT	Area Classification	Ex db IIC T6 Gb, Ex tb IIIC T85°C Db, Class I, Division 1, Groups A, B, C, D T6

Manual Override on the body

Mounting Namur mounting & In-line

Working pressure 2~8 bar

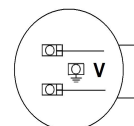
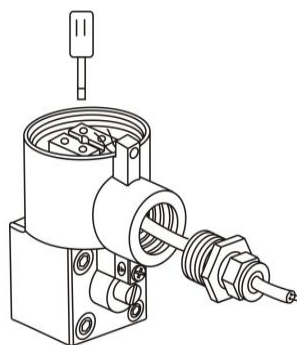
Working Medium less than 40µm filtered and dried air

Working Temp. -40℃~60℃

Environment. Indoor and Outdoor

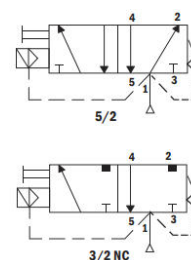
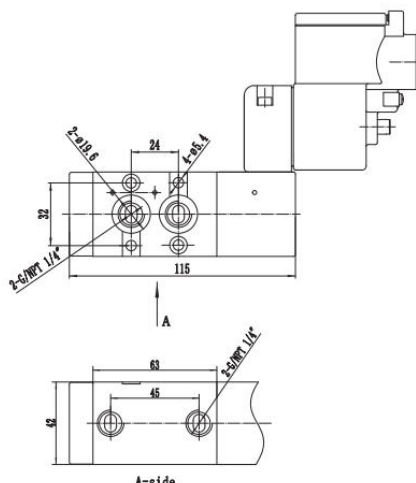
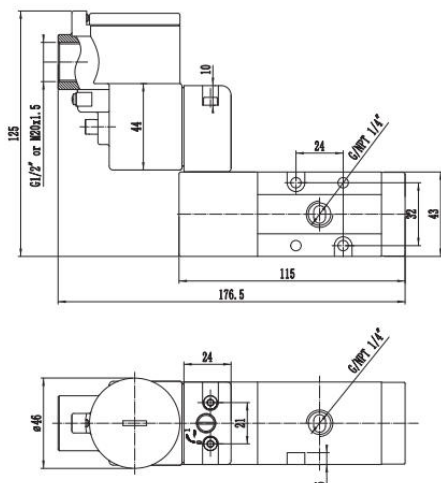
Wiring direction Side wiring

Wiring Diagram and Operating



Note: The Exd Cable Gland is not included. Enquiry please contact with us.

DIMENSION AND DRAWING



*For continuous improvement of the product, we reserve the right to alter the dimensions, technical data in this data sheet.

ALLIED AUTOMATION

www.allied-actuator.com

info@allied-actuator.com